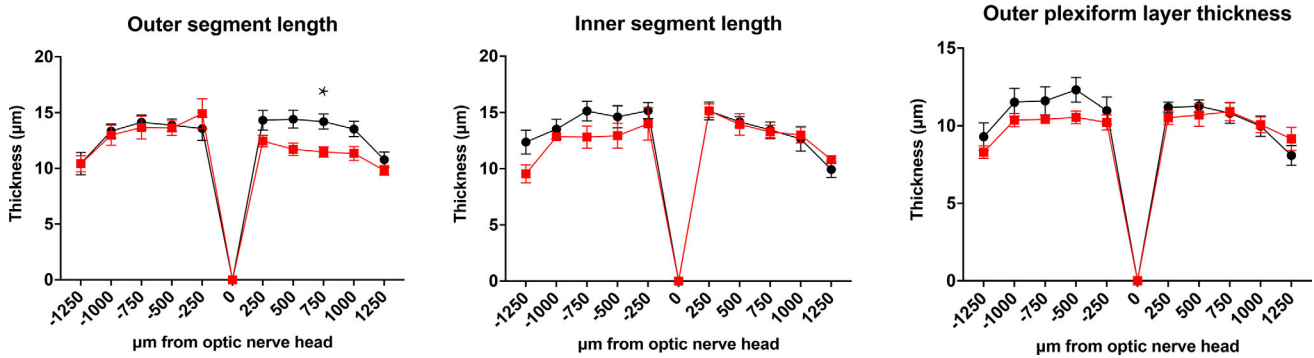
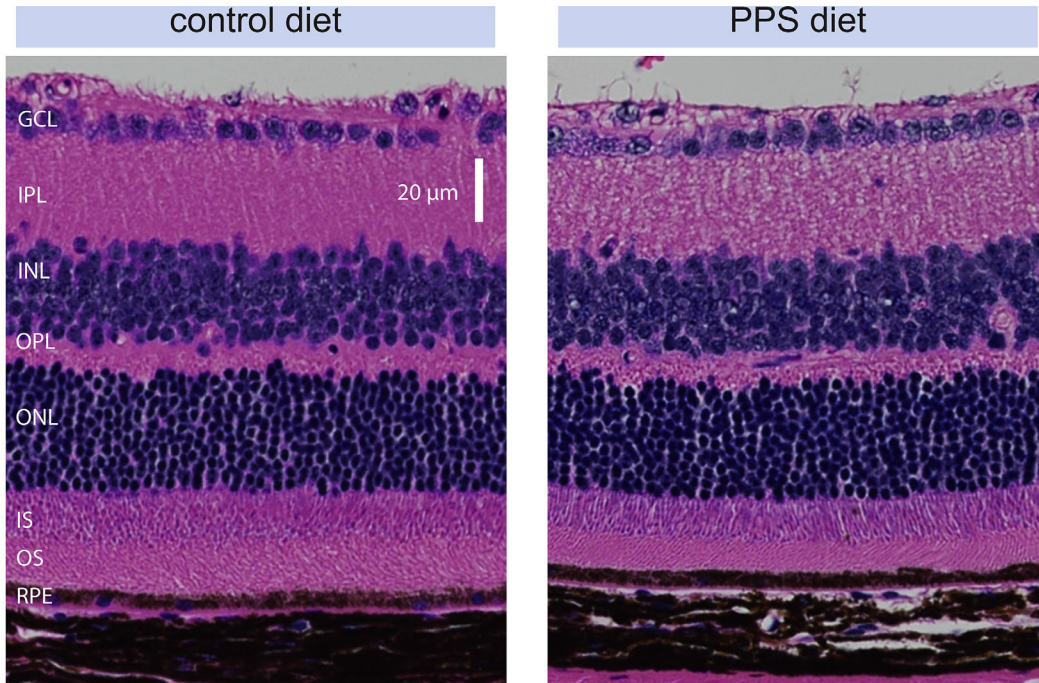


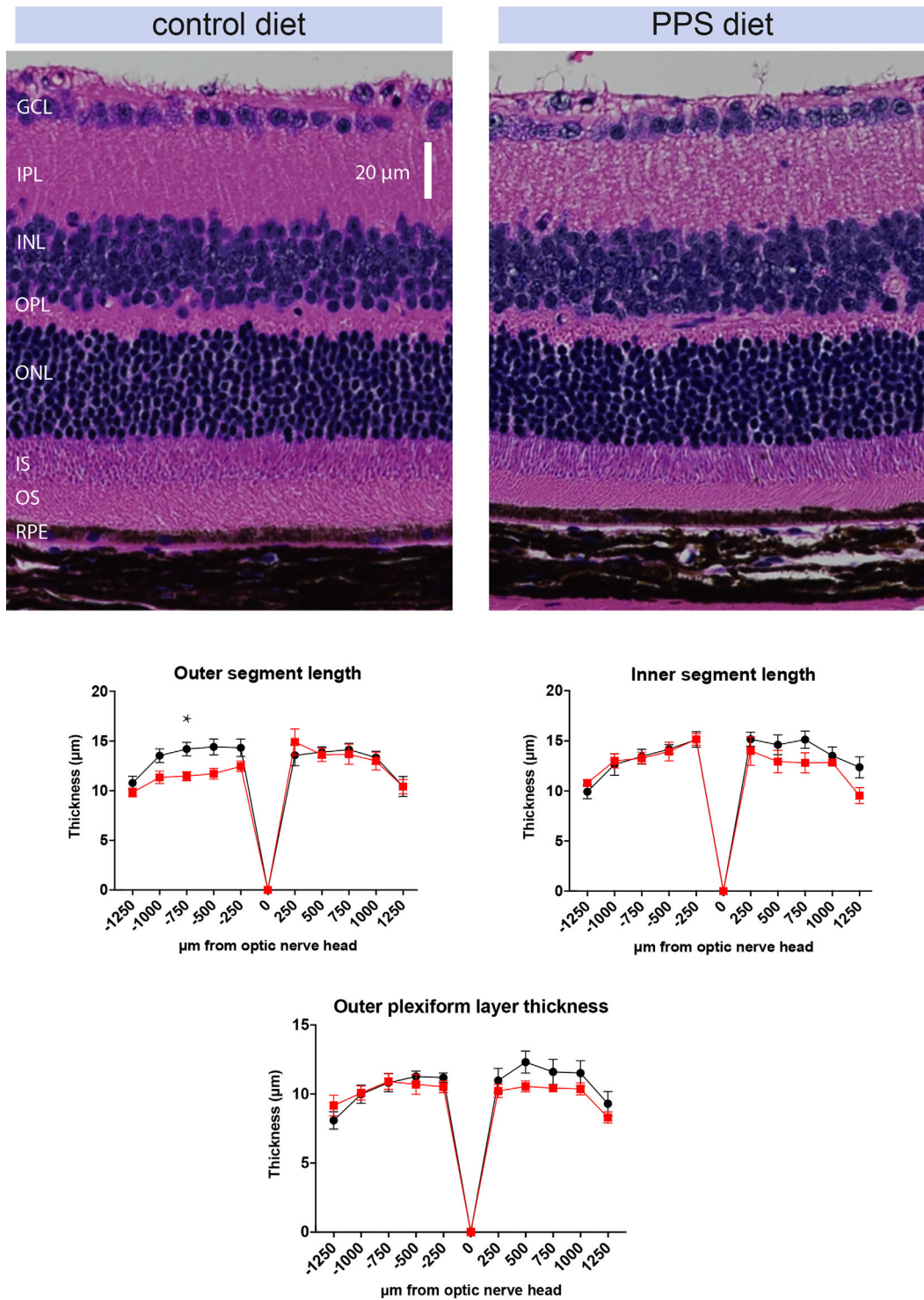
Erratum in: “Pentosan Polysulfate Sodium Causes Diminished Function and Subtle Morphological Changes in Retina and RPE of Mice” by Preston E. Girardot, Xian Zhang, Nan Zhang, Kevin J. Donaldson, Micah A. Chrenek, Jana T. Sellers, Andrew J. Feola, Jack Papania, John M. Nickerson, Nieraj Jain, and Jeffrey H. Boatright (*Invest Ophthalmol Vis Sci.* 2024;65(2):28), <https://doi.org/10.1167/iovs.65.2.28>.

After the article was first published, the authors reported that transverse retinal paraffin sections had their inferior-superior orientation reversed erroneously. This has now been corrected in the Results and Figures 5 and 6.

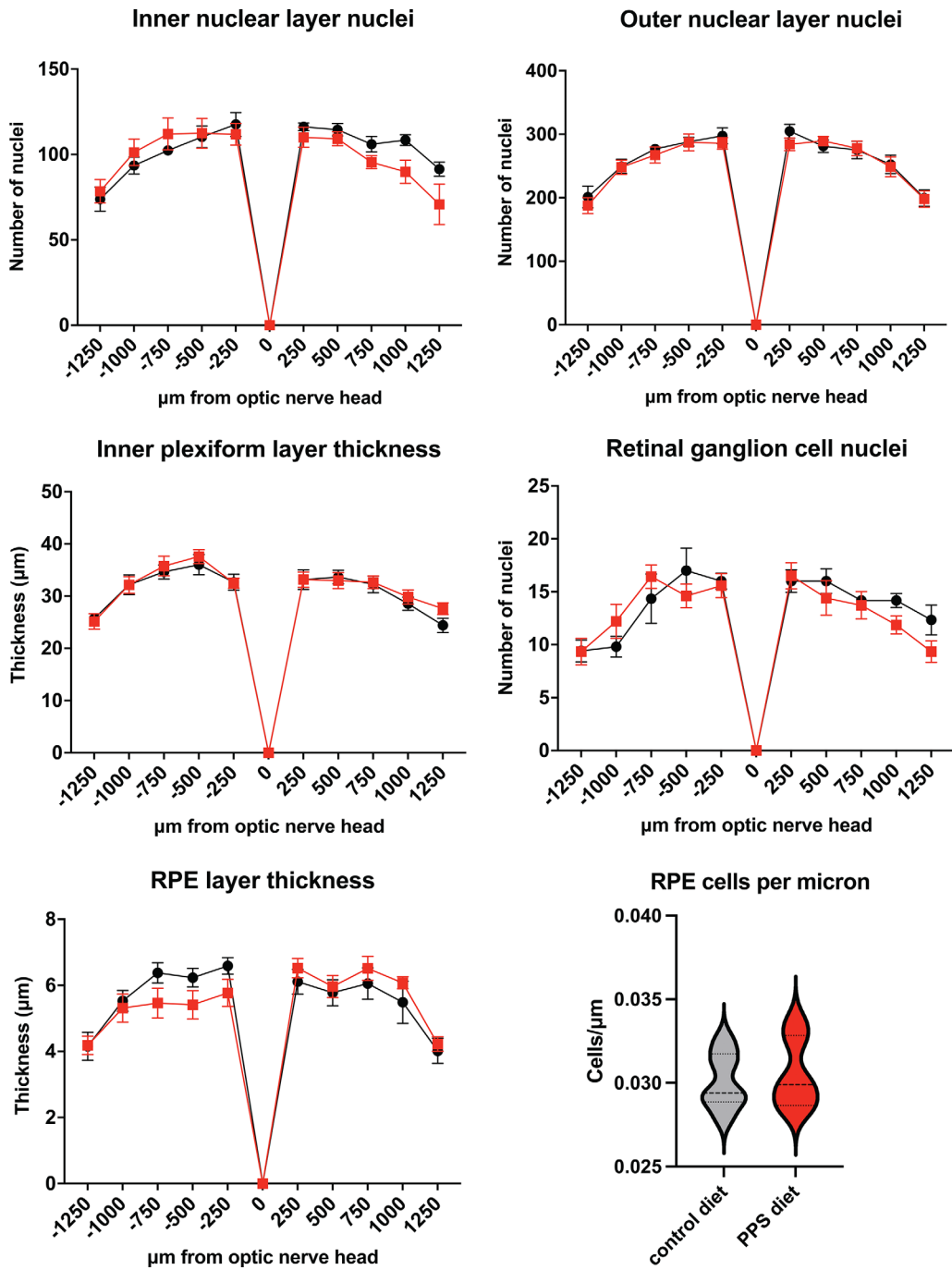


ORIGINAL FIGURE 5

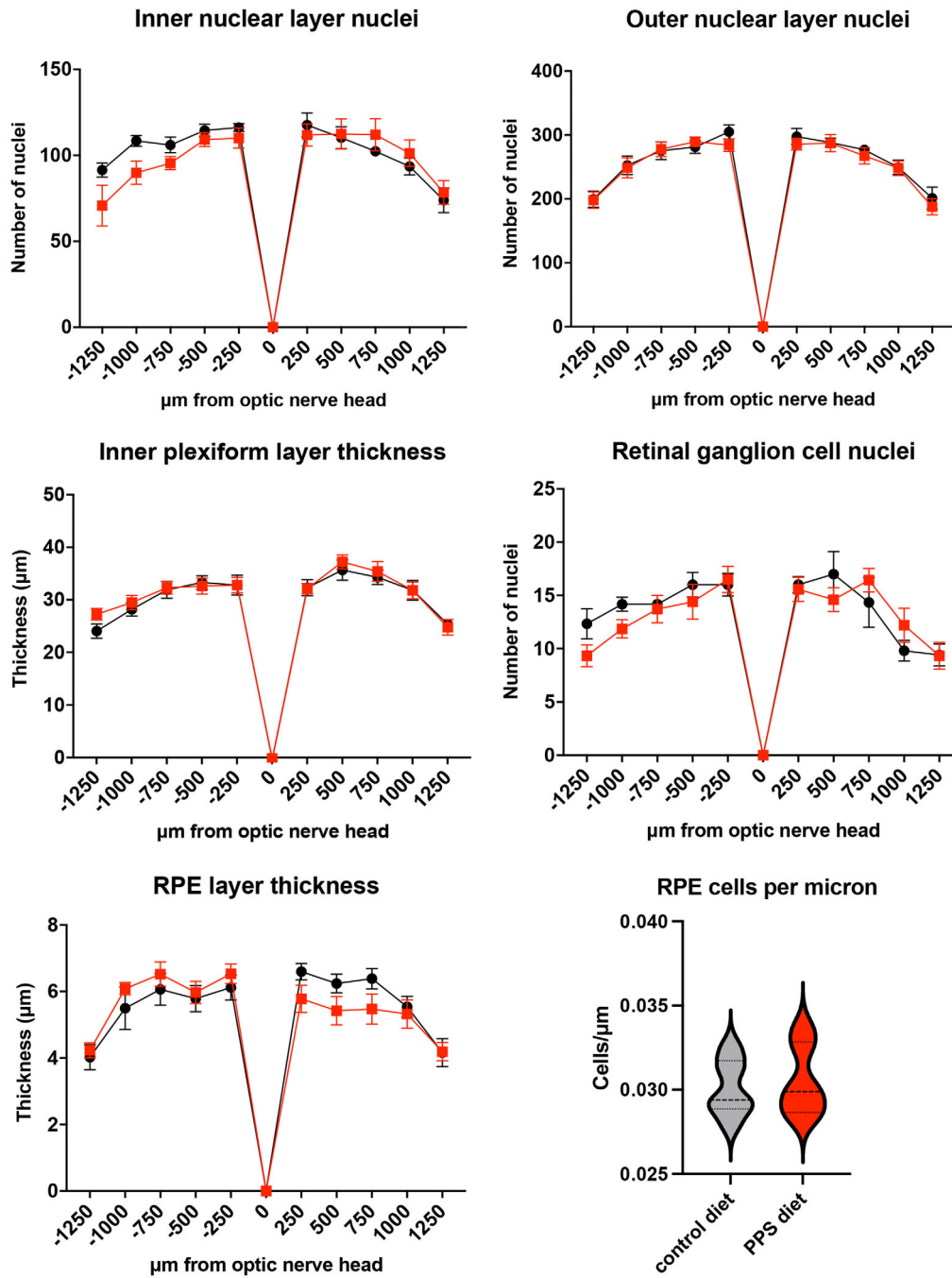




CORRECTED FIGURE 5



ORIGINAL FIGURE 6



CORRECTED FIGURE 6

Instances of the word “superior” (shown in bold below) have now been changed to “inferior” in the Figure 5 legend and in the section “PPS-Treated Mice Had Thinning of the Outer Retinal Layers” in the Results.

Original Figure 5 legend: “PPS-treated mice had thinner outer segment (OS) layers in the **superior** retina. Histology on retinal sagittal sections revealed main drug effects on outer segment length, inner segment length, and outer plexiform layer thickness, two-way ANOVA, outer segment: $F(1, 131) = 8.681$; $P = 0.0038$; inner segment: $F(1, 128) = 4.248$; $P = 0.0413$; outer plexiform layer: $F(1, 127) = 4.159$; $P = 0.0435$. Multiple comparisons testing showed statistically significant decreases in outer segment length in the sector 750 μm **superior** to the optic nerve head (untreated [*black*], $14.2 \pm 0.677 \mu\text{m}$ vs. treated [*red*], $11.5 \pm 0.458 \mu\text{m}$; $P = 0.0471$; two-way ANOVA with Sidak’s multiple comparisons test of sectors **superior** to the optic nerve head). Negative numbers of the x -axis represent the inferior side of the retina; positive numbers represent the superior side.”

Original text of the first two sentences of “PPS-Treated Mice Had Thinning of the Outer Retinal Layers” section: “Analysis of H&E-stained transverse retinal sections showed that PPS-treated animals had decreased outer segment layer thickness in areas of the central **superior** retina (Fig. 5). We observed statistically significant decreases in the sector 750 μm **superior** to the optic nerve head (untreated: $14.2 \pm 0.677 \mu\text{m}$ vs. treated: $11.5 \pm 0.458 \mu\text{m}$; $P = 0.0471$; two-way ANOVA with Sidak’s multiple comparisons test of sectors **superior** to the optic nerve head).”

Citation: Girardot PE, Zhang X, Zhang N, et al. Erratum in: Pentosan polysulfate sodium causes diminished function and subtle morphological changes in retina and RPE of mice. *Invest Ophthalmol Vis Sci.* 2024;65(4):47, <https://doi.org/10.1167/iovs.65.4.47>.